

Instruction Sheet

Follow these instructions to replace a proximity filter pan sensor.

Subject: 8263849/8263857 Proximity Pan Sensor Kit Instructions

Models affected: Touch Screen Fryers with Proximity Switches

03/06/2025

1. Disconnect the power from the fryer.
2. Relocate the fryer to gain access to the rear of the fryer.
3. Disconnect the proximity switch connector (see Figure 1).
4. Remove the existing proximity switch and replace in the same orientation as the original proximity switch (see Figure 2).
5. Reconnect power to the fryer to test proximity switch by aligning something metal in front of the switch (see Figure 3).
6. If the switch is wired correctly, the rear of the proximity switch will illuminate orange (see Figure 4).
7. Secure the pan switch harnesses up with wire ties or clips. Ensure the harnesses can't fall down and interfere with the filter pan (see Figure 5).
8. Insert filter pan to test position of the proximity switch (see Figure 6). A **"P" IS DISPLAYED** in the top right corners of the touch screen controllers **when the filter pan is out of position** (see Figure 7).

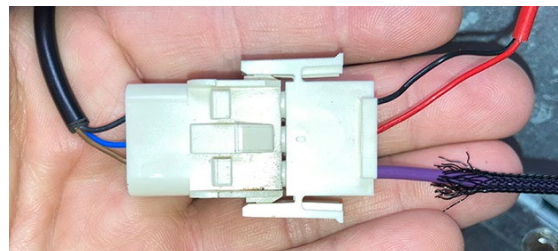


Figure 1

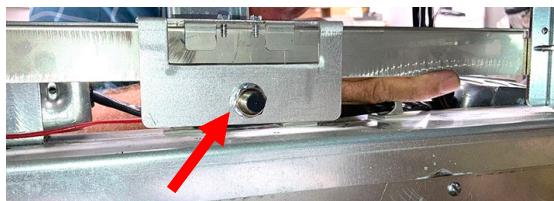


Figure 2

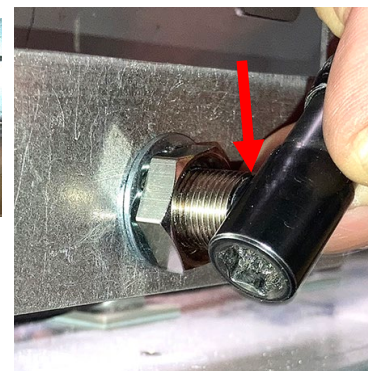


Figure 3



Figure 4

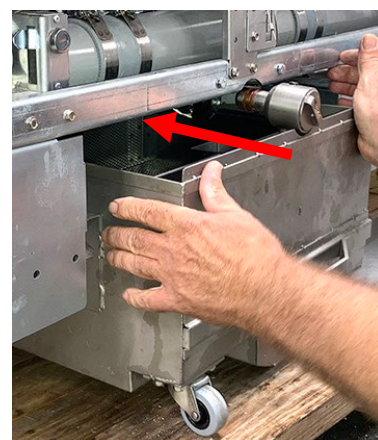


Figure 6

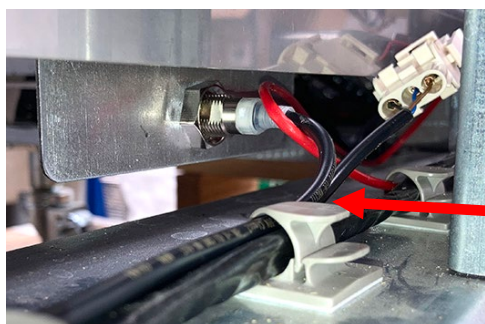


Figure 5

Continued on the following page.

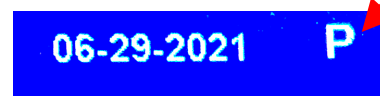


Figure 7

9. Ensure a "P" is **NOT DISPLAYED** in the top right corners of the touch screen controllers when the filter pan is fully inserted. If the pan is pulled out of the fryer 3/8" or less, it should still make and not display a "P" (see Figure 8).
10. Adjust the pan switch by rotating the nut. Ensure the switch isn't crashing into the pan. In most cases, the switch should be flush with the nut closest to the pan or there should be a gap of approximately 1/8" between proximity switch and the filter pan (see Figure 9).
11. Pull the filter pan out and push back in several times to verify the proximity switch is working correctly.
12. Ensure the nut on the proximity switch is completely tightened.
13. Once complete, return the fryer under the hood and return the fryer to service.



Figure 8



Figure 9